

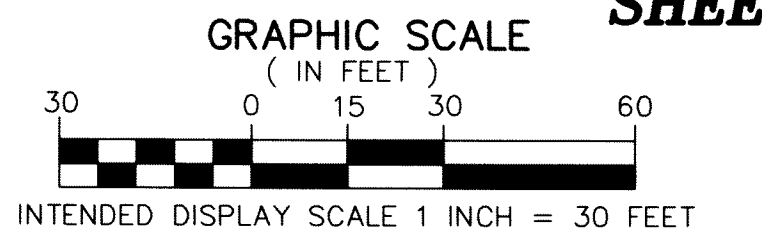
THIS INSTRUMENT PREPARED BY
DAVID P. LINDLEY
OF
CAULFIELD and WHEELER, INC.
SURVEYORS — ENGINEERS — PLANNERS
7900 GLADES ROAD, SUITE 100
BOCA RATON, FLORIDA 33434 — (561)392-1991

TERRA NOVA MUPD

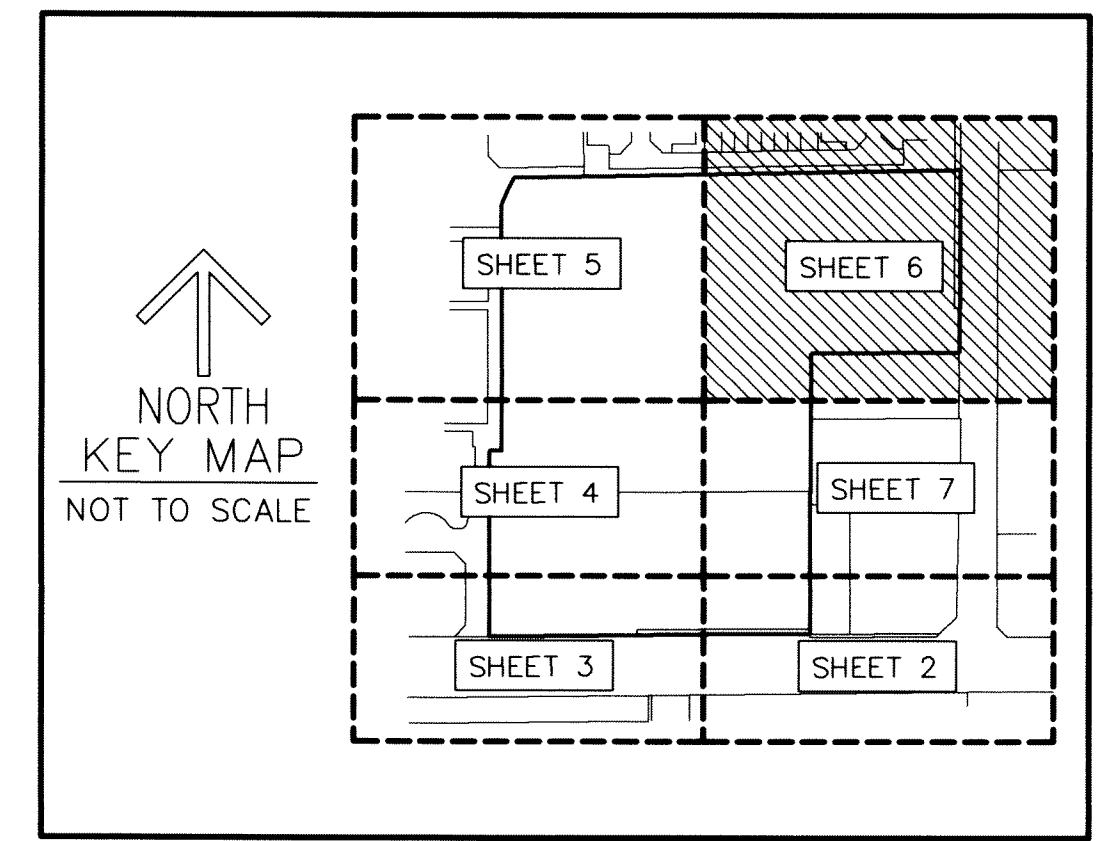
BEING A REPLAT OF A PORTION TRACTS 105 THROUGH 107 AND TRACTS 117 THROUGH 119
OF THE PLAT OF SUBDIVISION OF S.E. 1/4 AND W. 1/2 OF S.W. 1/4
OF SEC. 16 TOWNSHIP 46S RANGE 42E, AS RECORDED PLAT BOOK 1, PAGE 158
OF THE PUBLIC RECORDS OF PALM BEACH COUNTY, FLORIDA
LYING IN SECTION 16, TOWNSHIP 46 SOUTH, RANGE 42 EAST, PALM BEACH COUNTY, FLORIDA

NOTES
COORDINATES, BEARINGS AND DISTANCES
COORDINATES SHOWN ARE GRID
DATUM = NAD 83 1990 ADJUSTMENT
ZONE = FLORIDA EAST
LINEAR UNIT = US SURVEY FEET
COORDINATE SYSTEM 1983 STATE PLANE
TRANSVERSE MERCATOR PROJECTION
ALL DISTANCES ARE GROUND UNLESS OTHERWISE NOTED
SCALE FACTOR = 1.0000270
GROUND DISTANCE X SCALE FACTOR = GRID DISTANCE
BEARINGS AS SHOWN HEREON ARE GRID DATUM,
NAD 83 1990 ADJUSTMENT, FLORIDA EAST ZONE.

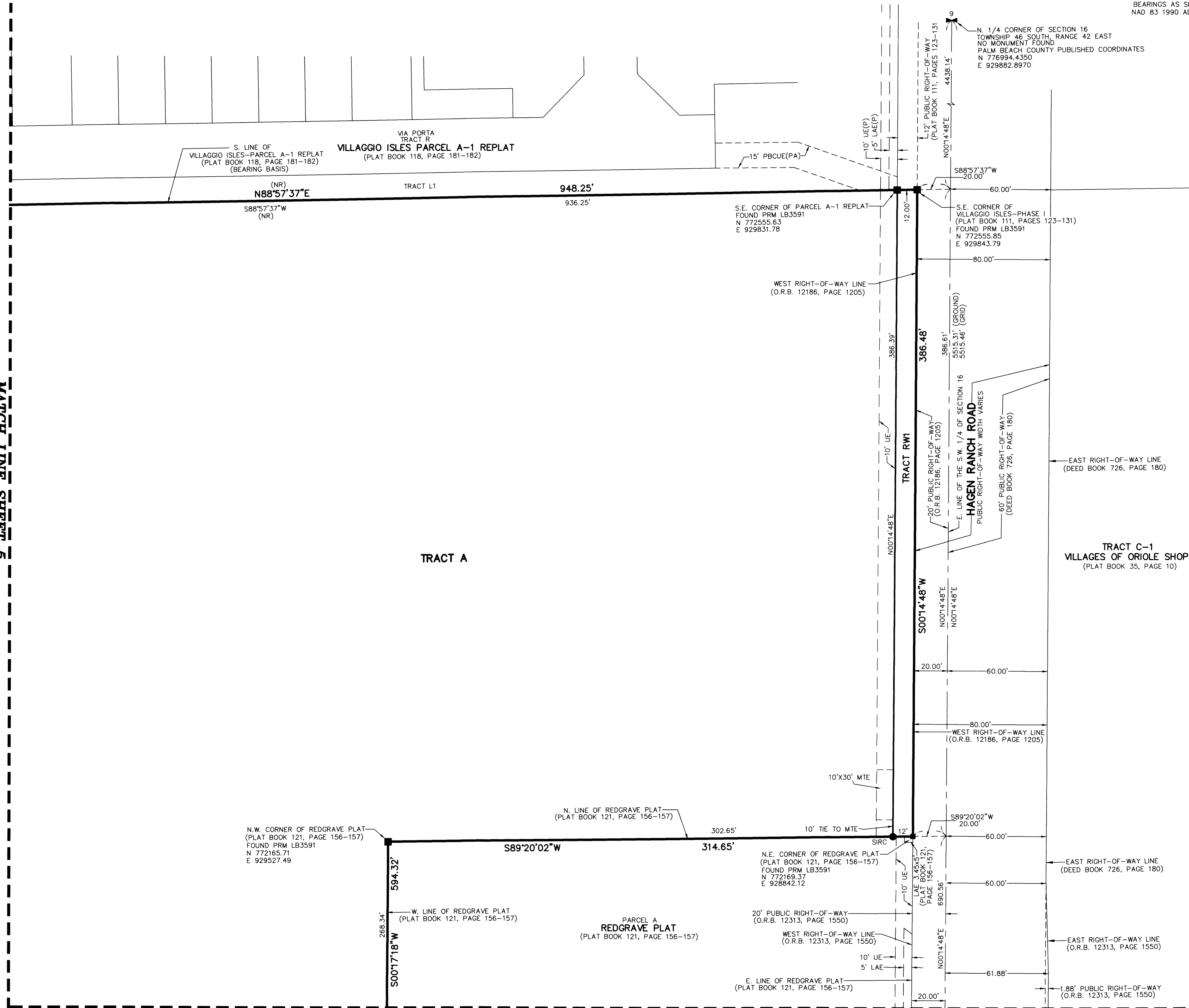
33



SHEET 6 OF 7



MATCH LINE SHEET 5



MATCH LINE SHEET 7